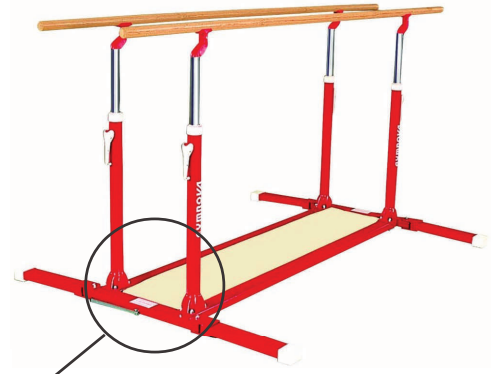
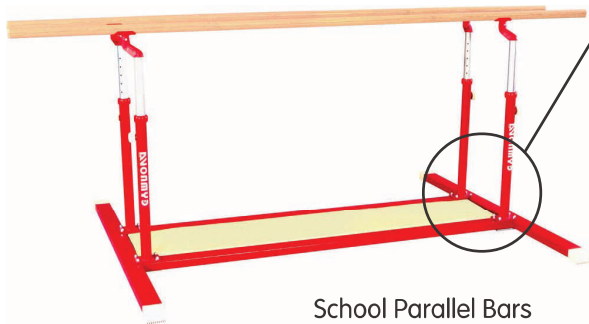
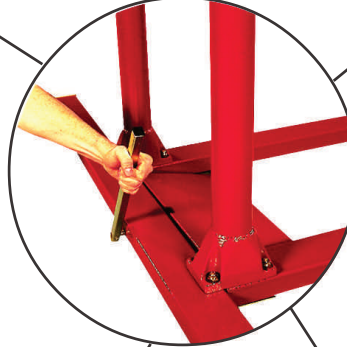


**BUILT-IN PAIR OF TRANSPORT
TROLLEYS FOR FREESTANDING BARS****3850****KEEP THIS
DOCUMENT**Freestanding Asymmetric Bars
Ref.: 3345A, 3347, 3356 & 3357Parallel Bars for Training
Ref.: 3910, 3915, 3921 & 3925**Trolley**School Parallel Bars
Ref.: 3901, 3905, 3906 & 3907Mixed Bars
Ref.: 3380 & 3391**Warning:**

This equipment should be installed by a qualified individual.
The apparatus should only be used by one person at a time, under the supervision of a qualified individual.
Using this equipment for purposes other than those originally intended is not allowed.

Recommendations:

As shown in French Standard NF S52-400 the following is recommended:

- keep these instructions for subsequent reference (inspection, maintenance, etc.).
- periodically carry out predictive maintenance.
- depending on how much it is used, have the equipment serviced yearly or every few years.

Packaging:

1 Pack (ref. 3850): Pair of transport trolleys

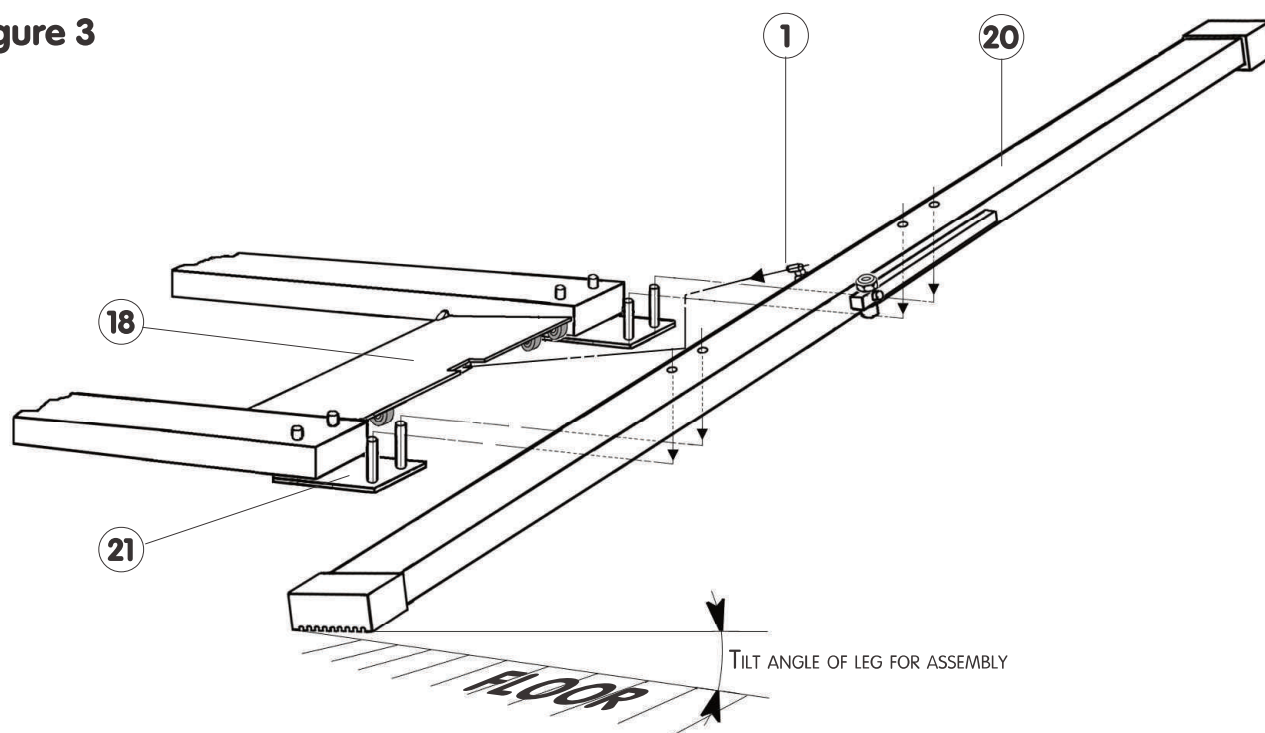
Weight: 13 kg (28.66 lb) Dimensions: 510 x 290 x 120 mm (1.67 x 0.95 x 0.39 ft)

Volume: 0.018 m³ (0.6357 ft³)

Constantly aiming to improve our products, we reserve the right to make changes to the equipment and dimensions without further discussion.

- 5 - Position each leg (20), slightly tilted at each end of the "trolley+spars+flanges" assembly resting on the floor, as shown by **Figure 3**.
- 6 - Insert the cam "pin" (1), previously lubricated, into the housing of the plate (18) (see **Fig. 3**). If necessary, slightly lift the trolley for easier assembly.
- 7 - Lower the assembly to insert the leg (20) onto the flanges (21) (see **Fig. 3**).
- 8 - The pair of trolleys then is in rest position.

Figure 3



III. Assembling the apparatus:

- 1 - Freestanding Asymmetric Bars: Refer to the Assembly Instructions NM17.
- 2 - Parallel Bars for Training and Mixed Bars: Refer to the Assembly Instructions NM225.
- 3 - School Parallel Bars: Refer to the Assembly Instructions NM117.

IV. Usage:

1 - Activating the trolleys:

- Warning: it is recommended to support the levers (4) when rocking (this allows dampening the bump due to the apparatus weight), in order to avoid damaging the whole equipment.
- In order to set the apparatus on wheels, simply rock each lever (4) so that the trolley may come into contact with the floor by lifting the apparatus.
- Warning: check that the lever is actually abutting when rocking (far exceeding the vertical position) to allow for correct positioning of the trolley, i.e. in "work" position.
- For moving, simply push the apparatus fitted with the trolleys.

2 - Retracting the transport trolleys:

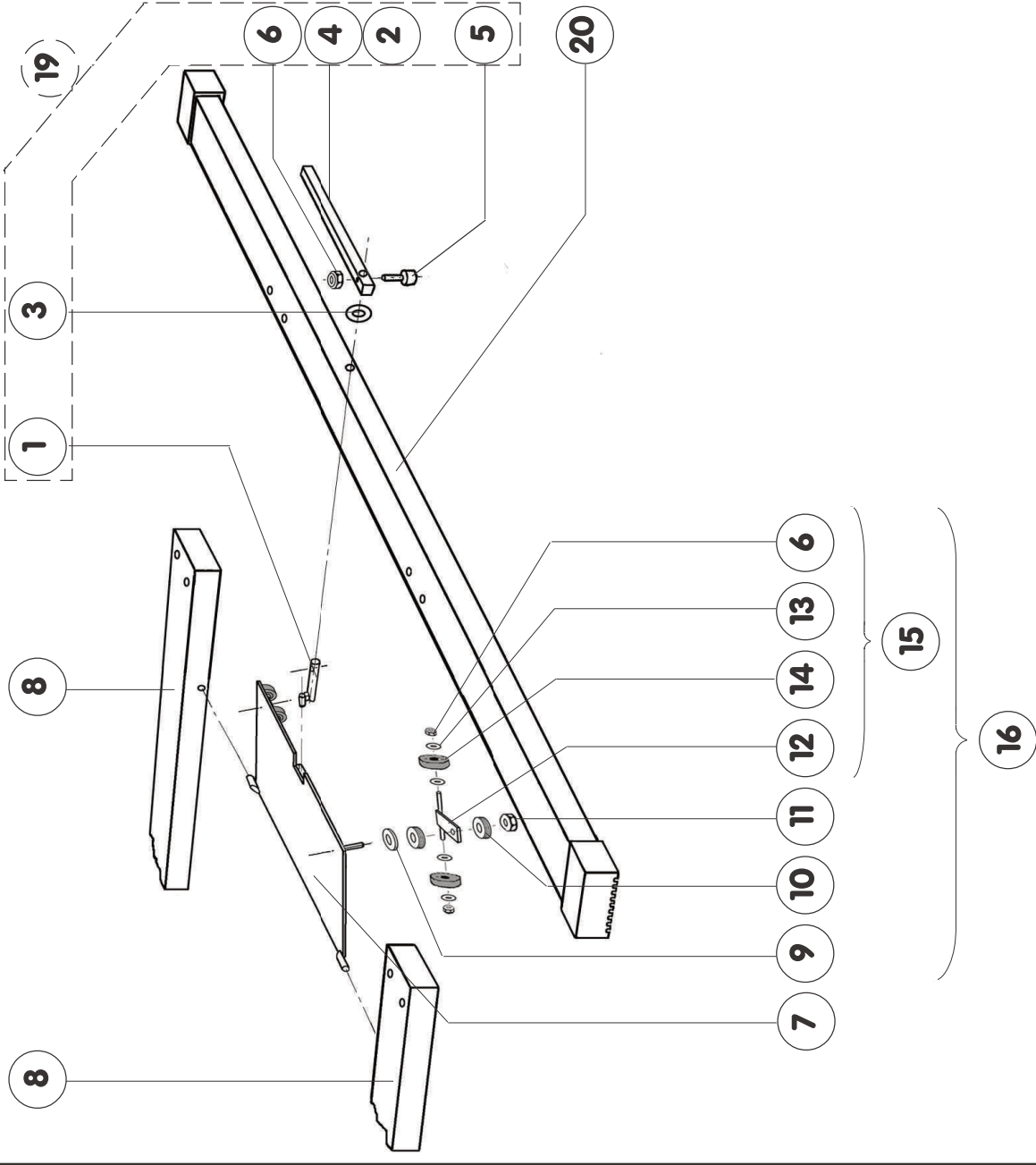
After moving the apparatus, set it back onto the floor, by folding the levers (4).

V. Maintenance:

- 1 - A regular cleaning of the apparatus allows better viewing of the problems, if any (distortion, breakage or corrosion).
- 2 - Before use, check wear parts and safety elements each time for good condition and operation:
 - wear of the cam (1), trolley plate (7), wheels (14), bearing system (18).
 - check the correct tightening of all attachment elements (5), (6) and (11).
- 3 - **Important:**
 - If a problem is detected or suspected, do not use the equipment as long as it has not been checked by a technician.
 - Any damaged or distorted piece should be replaced as soon as possible.

VI. Storage:

Always store the equipment away from humidity and heat.



ITEM	QTY	DESCRIPTION	REFERENCE
29	-	-	-
28	-	-	-
27	-	-	-
26	-	-	-
25	-	-	-
24	-	-	-
23	-	-	-
22	1	Set of 4 stirrups + bearings	385/19
21	-	Frame flange	-
20	-	Frame leg	-
19	2	Pair of levers with shafts	385/04
18	1	Bearing Kit	3850/20
17	2	Complete plate	-
16	4	Complete stirrup + bearings	385/11
15	4	Complete stirrup	385/10
14	8	Black 42 dia. wheel	GROU4208NO
13	16	M8x18 flat washer	VRP008180Z
12	4	Wheel support stirrup	-
11	4	M12 H locknut	VEHF12000Z
10	8	Needle thrust bearing, 1226	QRTAI12026E
10	16	Backplate, 1226	QCPL12026E
9	4	M12x27 thrust washer	VRP012270Z
8	-	Leg spar	-
7	2	Trolley plate alone	-
6	10	M8 H locknut	VEHF08000Z
5	2	M8x30 CHC screw	VCHC08030Z
4	2	Lever	-
3	2	14x27 Z flat washer	VRP014270Z
2	4	Finned endpiece, 20x20	QEPA2020NO
1	2	Cam	-

Gymnova
 RUE GASTON DE FLOTTE
 13012 MARSEILLE
 Tél. : 33-(0)-4-91-87-51-20
 Fax : 33-(0)-4-91-93-86-89

BUILT-IN PAIR OF TRANSPORT TROLLEYS FOR FREESTANDING BARS

BY: E. BRIEU	DATE: 25/06/07	NW21e	Ref.: 3850
--------------	----------------	-------	------------

THIS DOCUMENT IS THE PROPERTY OF GYMNOVA. IT IS CONFIDENTIAL AND SHALL NOT BE REPRODUCED WITHOUT PRIOR AUTHORIZATION.

18 21 22 NOT SHOWN

17

To order spare parts, provide the description, part no., and delivery date of the entire apparatus.