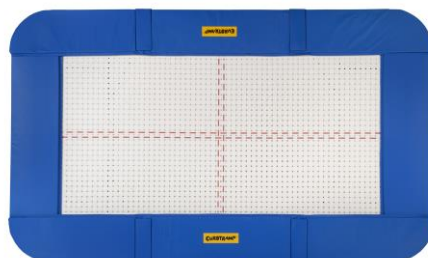




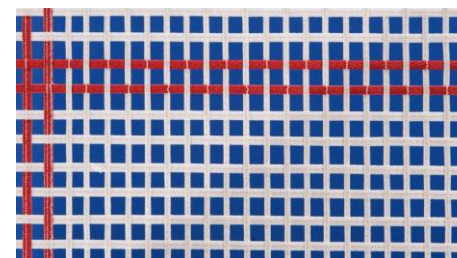
LARGE TRAMPOLINES ACCESSORIES

EUROTRAMP®

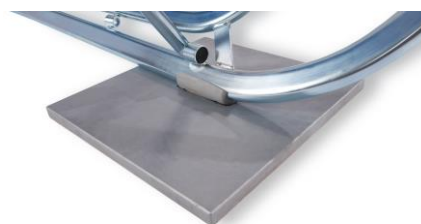
All the accessories (padding, beds, springs et stability plates) were designed only for Ultimate, Master and Grand Master Eurotramp trampolines.



Padding



Beds



Stability plates

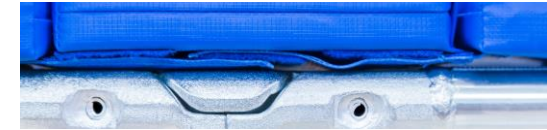


Springs

Padding

Protect the trampoline from the metal frame in the event of a fall. They are shock absorbing and stable. Equipped with a fixing system.

PADS THICKNESS	MASTER	GRAND MASTER & ULTIMATE
32 mm	E11120	E11110
50 mm	/	E11111

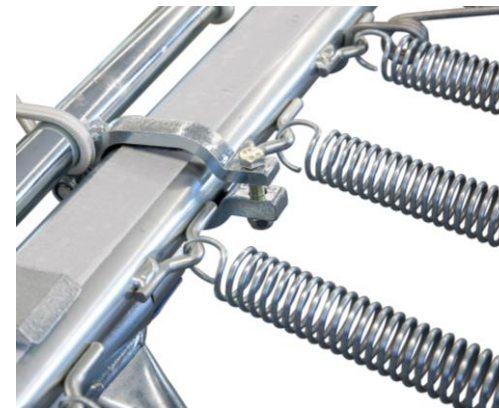


Springs

Ref. E31133 – Complete set of tempered steel springs

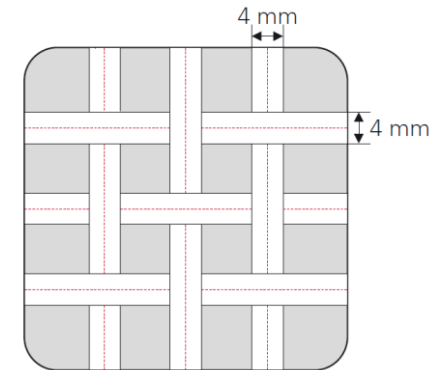
Composition:

- 110 standards springs
 - Length: 258 mm
 - Ø 29 mm
- 8 reinforced corner springs
 - Length: 258 mm
 - Ø 39 mm



Beds

For more safety and durability, most of our beds are 100% bedded in nylon.

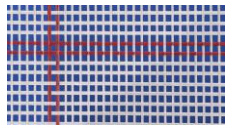


When talking about 4x4 beds, 4 mm means the width of the strands, both in the long and in the wide direction

BEDS	ULTIMATE	GRAND MASTER	MASTER
4 x 4 bedded	E26410 *		
5 x 4 bedded	E25410		
6 x 4 bedded	E26210		
6 x 6 bedded	E26310		
13 x 13		E21510	E21520
45 x 45		E21710	E21720
Synthetic		E21910	E21820

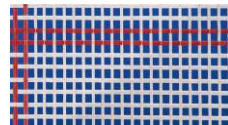
* Compliant with FIG standards when these beds are combined with an ULTIMATE trampoline range as well as the safety platforms (Ref. 27300 or 27301) and the associated mats (Ref. 28000 or 28001)

4 x 4 mm



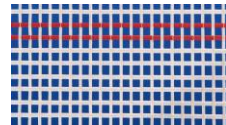
It offers the maximum permissible jumping performance according to FIG rules and is used in almost all trampoline competitions worldwide.

5 x 4 mm



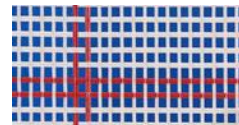
Because of the minimal air resistance caused by bouncing, it offers the high performance required for competitions.

6 x 4 mm

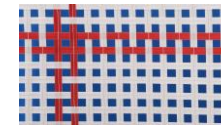


Economic model. Lower level of performance than the 6x4 mm model but can be also used in competitions.

6 x 6 mm

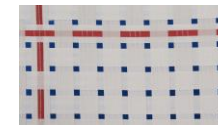


13 x 13 mm



Standard bed, comfortable, with a broad spectrum of performance and excellent spring characteristics

45 x 45 mm



High degree of comfort, ideal for beginners. This bed is also recommended for therapeutic purposes, as it offers a very soft and skin-friendly surface

Synthetic



Ideal for school. High performance and a very harmonic and balanced spring behaviour.

GYMNOVA	FP503-EN	UPDATE : 04/01/2021	REFS. E11120, E11110, E11111, E26410, E25410, E26210, E26310, E21510, E21710, E21910, E21520, E21720, E21920, E31133, TZ001, TZ002	TRAMPOLINES	MARKETING DEPARTMENT Y.NOUGUIER
----------------	----------	------------------------	---	-------------	------------------------------------

Stability plates

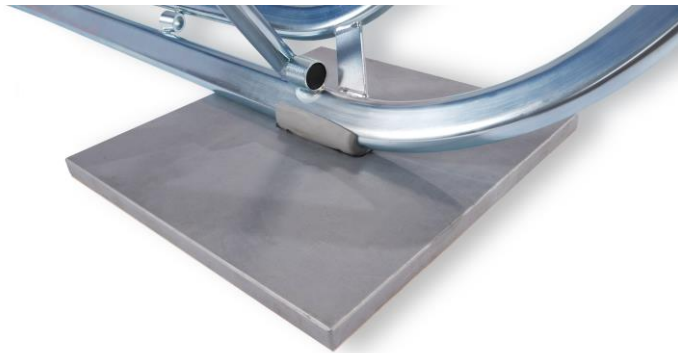
To avoid these disturbing vibrations and slight displacements of the trampoline, stability plates with a slide-resistant underside are laid under the stand surface of the trampoline, which enlarges the support surface of the legs a multiple number of times. This results in higher stability and safer gymnastics.

Stability plate 50 x 50 x 3 cm made of multiple layers of limed wood with milled-recess for housing floor protection pads and slide-resistant underside.

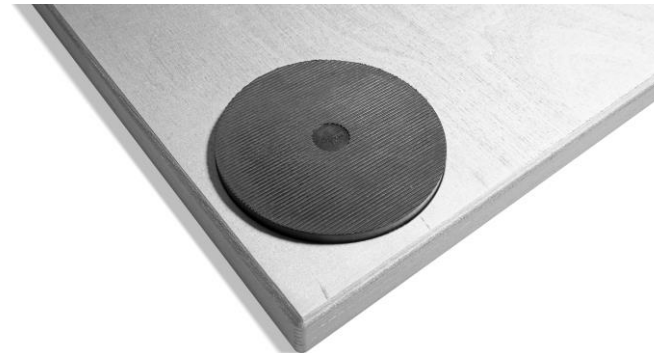
Weight: 4 kg.

Ref. TZ001 - Stability plates for GRAND MASTER ET MASTER trampolines

Ref. TZ002 - Stability plates for ULTIMATE trampolines



REF. TZ001



Non-slip pads